

GOLD COUNTRY WOODCRAFTERS

Newsletter December 2022

Vol 98

GCW Newsletter Brief:

We had a good turnout for the December meeting with 27 attending including 1 guest. The topic focus for this meeting was woodworking Tips-N-Tricks. We had member participation plus 3 YouTube videos. There was also a good turnout for the Show-N-Tell portion of the meeting with 10 members presenting. Five members submitted project contributions for this newsletter. There are no member message postings.

Announcements and News section:

- April Project Challenge theme.
- GCW membership dues.
- Badge Etiquette.
- Upcoming Meeting Topics.



President's Message:



Dear fellow GCW members.

I want to wish each of you and yours a very Happy New Year in 2023.

I am so looking forward to Spring already for some warmer weather and more comfortable shop time. More than that, I look forward to the exciting projects forthcoming at our "Show-N-Tells" this coming year as well as the planned speaker/presentations.

It has been an exciting year for me personally in getting myself more involved in the GCW organization and attempting to make each meeting as interesting as possible. The Executive Committee is always looking for new ideas that will be of interest to at least the majority of the membership.

For January we will hopefully have Cade Herring from the Paint Spot available for a presentation. He will be talking about resins. Not just for turning but uses in a variety of different wood mediums such as bark, sawdust, chips, or just anything wood. This should make it interesting to a wider audience outside of turners. I did see some of his work, It looked good and is something different but very applicable to wood crafting. Don't miss this meeting; it may open up new adventures in your wood shop!

I hope to see you at the January 10th meeting.

Happy turning, carving, sawing and drilling:

Basil Borkert

GCW President

GOLD COUNTRY WOODCRAFTERS

Newsletter December 2022

Vol 98

Announcements and News:

April Project Challenge: The GCW Executive Committee is looking for a project theme for our April Project Challenge. If you have an idea, please suggest it at the January meeting or just send an email to the address used to publish this Newsletter. As examples: the Theme for last April was “Using Bamboo in a Project” and last October the theme was “For the Birds”. So give it some thought and pass your project theme idea along. We have project challenges each April and October.

GCW Membership dues: It’s that time again, a new GCW year. Dues for 2023 are again \$25 and are due in January. You can pay at the upcoming meeting or send it in by mail. The mailing instructions and address are provided at the end of this newsletter.

Badge Etiquette Reminder --- Badges “to the bucket”: Please wear you badge prominently (so they can be seen!) during meetings and at the end put-em in the bucket!

Upcoming meeting topics:

- January 10th 2023: Using Epoxy in woodworking by Cade Herring of the [Paint Spot](#).
- February 14th carving presentation with Ed Santaroza. Michael Jay of Woodcraft Supply spoke very highly of him. He is a carving craftsman with many years of experience and a carving mentor. We would like Michael Jay for setting up this presentation for GCW. Thanks Michael.
- Suggestions for topics for upcoming meetings are encouraged and are welcome.

December Tips-N-Tricks Event:

Our members seemed to enjoy the woodworking Tips-N-Tricks event at the December meeting. Members were asked to bring a woodworking Tip or Trick to share with fellow members. We had several members with some great ideas who did just that. We also showed 3 YouTube videos that gave our members a number of ideas that could be used in their future woodworking endeavors. The links to the videos shown are provided below.

I have personally tried an idea suggested by one of our members, Jim Gott. He shared a tip he had picked up a while back. That was a way to reduce/eliminate the runout at the end of an unsupported turning. The idea is to apply a lever, dowel etc, supported by the tool rest and have it press upward under the end of the turning. I tried this the other day on a tool handle I was turning. It works! The turning runout was greatly reduced and I was able to drill the hole for the tool tang.

Please let us know if we should have Tips-N-Tricks at a future 2023 meeting.

1. <https://youtu.be/GDvRGGKVKOM>
2. <https://www.youtube.com/watch?v=K0FiYuwSi0o>
3. [5 Carpentry Tricks You Probably Haven't Seen! - YouTube](#)

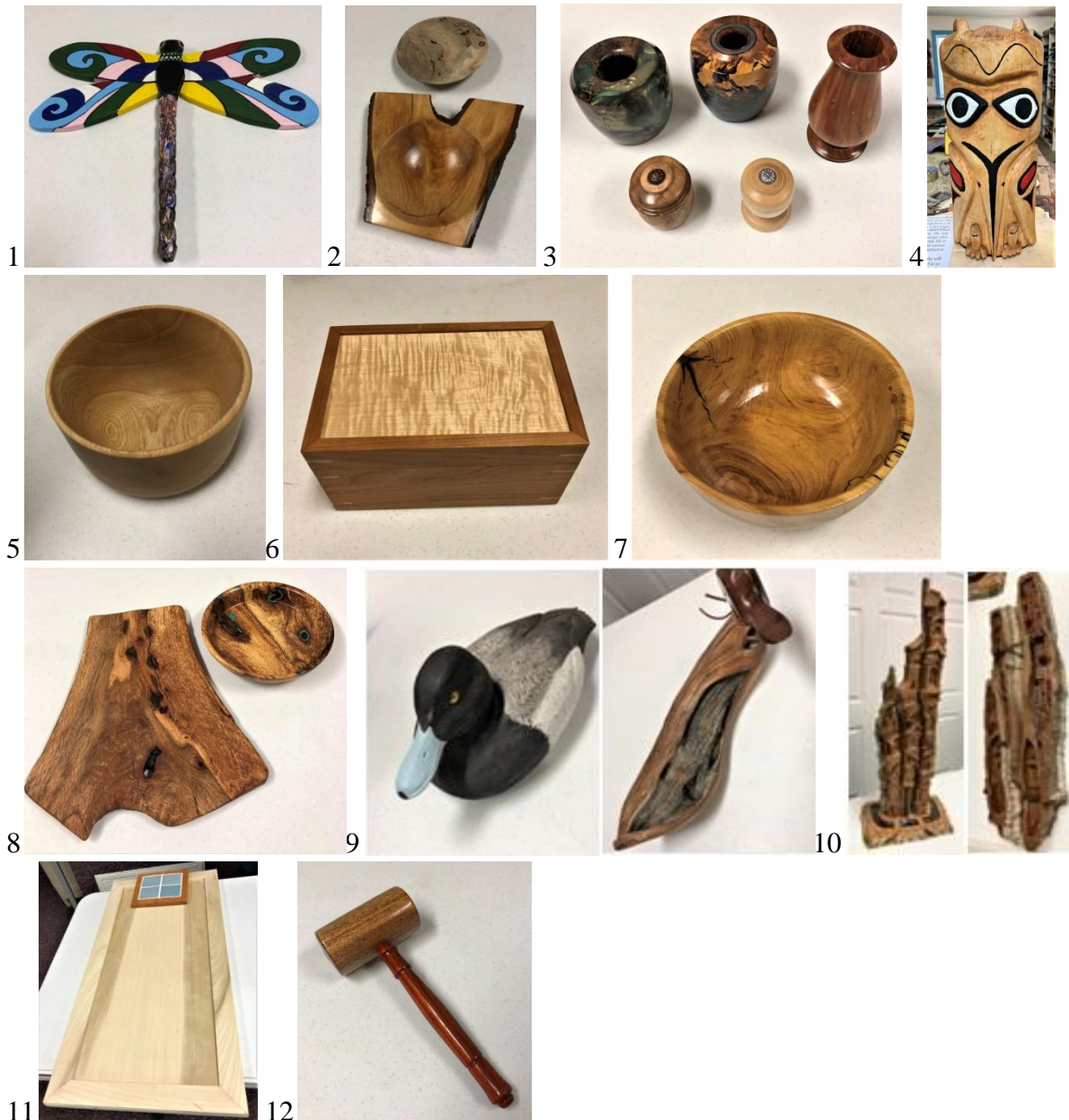
GOLD COUNTRY WOODCRAFTERS

Newsletter December 2022

Vol 98

December 2022 meeting Show-N-Tell Summary:

For December we had 10 members showing their latest woodworking craftsmanship. Mark Butzler managed the Show-N-Tell. The members showing their work were, in order, **Micky Dupper***: Large Dragon Fly, **Harvey Myers**: Plum Crotch Bowl & Small Platter, **Gail Cone***: 5 Turnings, **Roy Carter***: Totem Pole, **Oscar Wittrock**: Ash Bowl Turning, **Jim Gott**: Keep Sake Box, **Basil Borkert***: Ash Bowl Turning, **Casey Keller**: Crotch Platter & Turned Bowl, **Don Lawson***: 2 Carved Ducks, **Guest Don Maher**: 2 Cottonwood Relief Carvings, **Bill Meronek**: Warped Door & Warped Plate “presented for member input” and **Gordon Patnude**: New Club Gavel. Those with an * contributed to this newsletter. Thumbnail pictures are shown in order of presentation.



GOLD COUNTRY WOODCRAFTERS

Newsletter December 2022

Vol 98

December Project Submissions (5 Members):

Micky Dupper



This is the dragon fly yard art that I brought to the meeting. It is Cedar wood painted with acrylic paint. The black lines between the colors are Sharpie. It has 3 coats of Varathane brand Spar Urethane Water Based Exterior Clear Gloss. It worked great with no Sharpie bleeding. I'll be hanging the dragon fly in my mom's yard for Christmas.

Happy Holidays and see you all next year,

Micky



Basil Borkert



This bowl is turned from an Elm log cut in 2018. The shrinkage cracks were filled with a black tinted resin. The bowl was turned with the pith left on at each edge revealing some unique configurations in the resin filled cracks. Overall not an especially nice piece, but it was an experiment to discover more about Elm wood and it's turning and finishing characteristics. The finish is shellac and spar poly.

Basil



GOLD COUNTRY WOODCRAFTERS

Newsletter December 2022

Vol 98

Don Lawsom



The Lesser Scaup Duck on the left is detailed with feathers and features including glass eyes and paint, all requiring many hours. It is hand carved from basswood. The duck on the right is Manzanita and was carved from a branch. The natural features of the wood were left intact and the rest of the body was sanded and polished to emphasize the beauty of the wood. It was power carved.

Don



Gail Cone



Here are 5 of my latest turnings. The 2 vases, top left, are resin in Mistletoe on Oak and Purple Leaf Plum respectively. Each are about 5"x5". The resin colorent is again, pearl mica powder. The Tall vase is Purple Leaf Plum about 7.5"x 3.5". The 2 smaller turnings are ring boxes. These small turning are fun as I continue to practise turning detailed design and creating unique accent using texturing tools and colorents, including guilding waxes. Designs are applied on the underside of the lids as well on the top. The jewels are bracelet snaps (this brand is "Ginger Snaps"). No film finishes were used in these

turnings. The resin pieces are sanded up to 1500 then further refined using Yorkshire abrasives. I then spend a good deal of time polishing to a fine gloss. The other turnings are sanded to 400, finished using Yorkshire grits and then adding a coat of wax. All finishing is done with the lathe running.

Gail



GOLD COUNTRY WOODCRAFTERS

Newsletter December 2022

Vol 98

Roy Carter (posting provided by Micky Dupper)



The Totem wood is Birch about 18" tall from Roy's nephew's property in Willow, Alaska. His name is Tye and lives in Washington. He goes to harvest the birch pitch during pitch season. The property is covered in Birch trees. He decided to collect the sap for Birch Syrup. He has to collect 100 gallons of pitch to produce 1 gallon of syrup! He sells the pitch to a local company to make the syrup.

Roy will be shipping the Totem and a copy of Gold Country Woodcrafters newsletter to him after Christmas. The link to the company that makes the syrup is very interesting reading.

Link <https://alaskabirchsyrap.com/>

Totem legion: "Mosquito Totem Legend"

"The ancient totem legend depicted here tells of a party of hunters and their wives who were pursued by strange beings from a village in the valley. Climbing a mountain, the hunters caused avalanches which killed all their pursuers except one. He was Baboudina, Chief of the Mosquitoes, who had a long proboscis of pure crystal. He in turned killed all the hunting party, except a woman who ran to a lake and climbed to the tip of an overhanging tree.

Seeing the woman's reflection in the still water, Baboudina repeatedly jumped in to kill her, but without success. When he finally gave up, he froze to death. The woman cut out his heart and swung it over her dead companions, who returned to life.

Baboudina's body was burned on a large fire, and as his ashes rose, they became tiny mosquitoes—those pesky insects that are still with us today."



GOLD COUNTRY WOODCRAFTERS

Newsletter December 2022

Vol 98

Businesses that support GCW: Be sure to stop by Woodcraft Supply Sacramento, Pro Builder Placerville, The Paint Spot*, or the Rockler Woodworking* store in Rocklin. Please let them know how much Gold Country Woodcrafters appreciates their support. * ***Businesses offering GCW member discounts.***

Membership Dues: Our annual GCW club dues are \$25 and are due January of each year. Dues for new members joining throughout the year are prorated based on the month they join. You can pay the dues at any club meeting or send a check to our treasurer. Make the check payable to Gold Country Woodcrafters. Send to: Steve Cabrol 3000 Builders Place, Rescue, CA. 95672. ***Please note on the envelope ATT: Gold Country Woodcrafters.***

Notice to members: If your contact information has changed since joining please let the club know. Just send any changes you may have to the email address used to send out the newsletter. Your cooperation is much appreciated.

Gold Country Woodcrafters Meeting Place: GCW meetings are held the second Tuesday of each month unless otherwise notified and are at the Park Community Church meeting hall, 3901 Wild Chaparral Dr. Shingle Springs, Ca. exit 37 off highway 50. A map is provided on the home page of the GCW website.

Regards and happy woodcrafting.

Gail Cone

GCW Newsletter editor



I would like to acknowledge my wife, Karen, for taking the time and effort to proof read the newsletter each and every month. Believe me it makes a real difference and makes me look good.

GCW Web site: goldcountrywoodcrafters.com

If you have any comments or suggestions please send them to me via an email. If you wish to unsubscribe so you no-longer receive GCW newsletters just send me a reply with the word "unsubscribe" in the subject.